



QUICK LevelX

System Specifications

QUICK

Updated on March 24, 2004
Quick America Corporation

1. Preface

This document is to provide the specification details for setting up QUICK LevelX[®] Service.

Product Summary

- LevelX is a QUICK's new web-based service that does not require a stand-alone software installation.
- LevelX can be accessible through a standard web browser*.

*Microsoft[®] Internet Explorer[®]

2. System Requirements

[2.1] Software

OS:

- Windows NT 4.0 Workstation with Service Pack 6a
**Japanese version required for full functionality*
- Windows 2000 Professional with Service Pack 1 or 2 or 3
**English version plus Japanese localization or Japanese version*
- Windows XP Professional with Service Pack 1
**English version plus Japanese localization or Japanese version*

Browser:

- Microsoft Internet Explorer (IE) 5.01 + SP2 with the latest security patch
- Microsoft Internet Explorer (IE) 5.5
- Microsoft Internet Explorer (IE) 6.0

Excel:

(Required for DDE plug-ins)

- Microsoft Excel 97 (Office 97)
- Microsoft Excel 2000 (Office 2000)

<Notes>

When used with Windows 2000, the LevelX user must be logged on as a power user, or with a higher authority.

Any combinations of an operating system and a browser that are not listed above may result in unexpected problems, or dysfunction of the service.

[2.2] Hardware

- Intel® Pentium® II 400MHz or higher
- 128MB RAM or higher
- 34MB hard disk space or more
- 1024 x 768 with 16-bit high color or higher display resolution

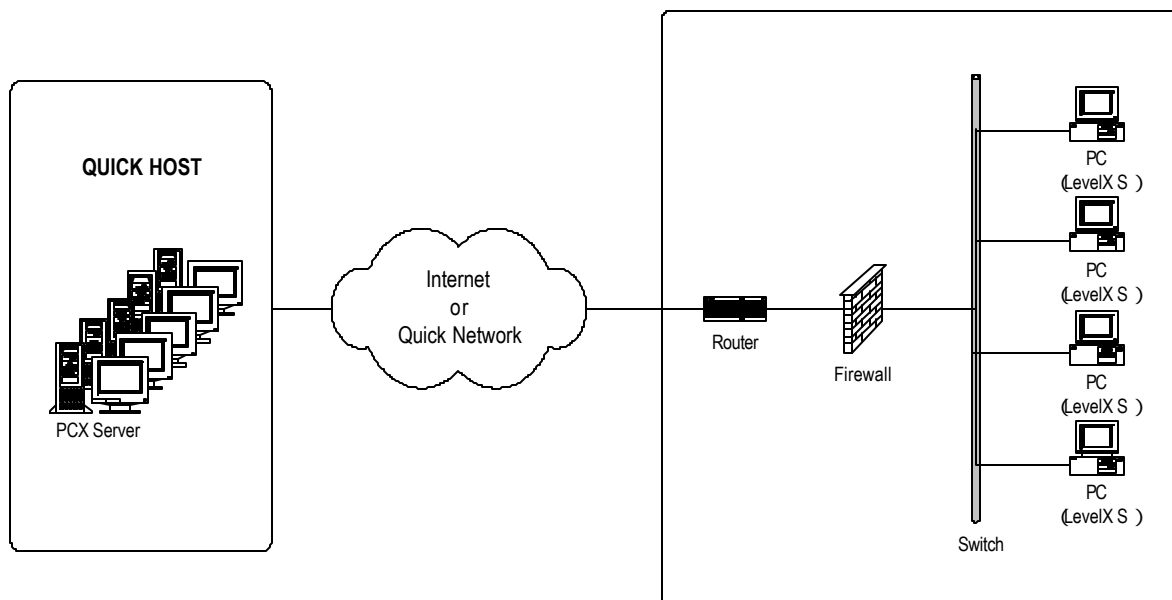
3. Network Architecture

[3.1] Network Components

- PCX Servers

LevelX client PCs are connected to the PCX servers hosted in QUICK's datacenter.

[3.2] Network Diagram



[3.3] Network Preparation

If you wish to access the LevelX service through a dedicated line, we will order a leased line in the speed of your preference. Please contact us and ask about the details.

<Notes>

When using the Internet as the connection method, there may be service interruptions or delays in the service response due to the high traffic over the Internet and/or the network condition of your ISP. Please be advised that under the circumstance, QUICK cannot monitor and troubleshoot your network problems.

4. System Configuration

[4.1] Browser (IE) Settings

- Proxy Server

LevelX client PC must be connected to a PCX (host) server through the common HTTP port 80, and one additional port 9190/TCP. Thus, if a proxy server exists in your network and the client's PC is configured to access the Internet via the proxy server, please make sure to have the PCX server's name or IP address listed in the exception list for the proxy.

e.g. lxic5n0.lxic5.quick.co.jp

- Securities Setting

IE's security setting should be configured as medium or lower levels.

[4.2] Modifications

Registry ActiveX control

[4.3] Download Files

Components Files:

IQISGetFileX Control	9.52MB (As of Ver. 6.6)
IQISLibLoadX Control	1.88MB (As of Ver. 6.6)

Installation Target Location:

C:\WINNT\Downloaded Program Files

or

C:\WINDOWS\Downloaded Program Files

[4.4] Firewall

The following communication protocol ports are used for the LevelX service.

80 HTTP

9190 TCP

- The connection is established by the client side to the PCX (host) server.
- The upper TCP/IP protocol is QUICK's original protocol.

[4.5] Software Updates

- LevelX clients automatically check for new updates upon launching
- The size of the updates files may vary

[4.6] User Authentication

User ID and password are authenticated upon logging on to the service.

[4.7] User's Preferences

LevelX user's preference, such as screen layouts, chart parameters, preconfigured issues, etc., is stored in the PCX (host) server as the connection is established.

<IMPORTANT INFORMATION>

Please DO NOT close the IE window that you use for the login while using LevelX. When this window is closed, the DDE function will be terminated and links for Excel cannot be established.

5. Technical Services

- Technical Support

Weekdays: 9 AM to 5 PM

Tel. (800) 685-3282 or (212) 310-1960

Email: support@quickamerica.com